

---

## Utilizing Wood Waste as an Alternative Material for Making Prayer Beads

Muhammad Rijalus Sholihin<sup>1</sup>, Neny Tri Indrianasari<sup>2</sup>, Sochib<sup>3</sup>

Department of Accounting, Institut Teknologi dan Bisnis Widya Gama Lumajang, East Java, Indonesia<sup>1,2,3</sup>

Corresponding Author: Muhammad Rijalus Sholihin (muhammadrijalus@gmail.com)

---

### ARTICLE INFO

Date of entry:  
5 July 2022  
Revision Date:  
9 August 2022  
Date Received:  
15 August 2022

### ABSTRACT

The Tasbih Craftsmen Group which is located in Tanjungsari Village, Umbulsari District, Jember Regency is also still in most other businesses, namely the need for guidance in order to be able to select and sort out good and correct alternative raw materials in order to produce good and according to expectations. In terms of raw materials, especially regarding the selection of raw materials in order to produce goods, it should be really available and have added value, not a few business actors have minimal knowledge and mastery of it, which is based on several factors such as lack of experience and utilization in providing raw materials, therefore the selection of alternative raw materials in producing goods needs to be considered. Therefore, through this community service program, it can help companies in selecting and providing raw materials for making prayer beads. The result of this service is a raw material that is easy to use, coffee wood, which is abundant wood waste for the Tasbih Craftsmen Group, which is located in Tanjungsari village, Umbulsari District, Jember Regency, including producing scientific articles that can be published in journals or the like.

Keywords: Raw Materials, Tasbih, Handicraft

---



Cite this as: Sholihin, M. R., Indrianasari, N. T., & Sochib, S. (2022). Utilizing Wood Waste as an Alternative Material for Making Prayer Beads. *Empowerment Society*, 5(2), 41-47. <https://doi.org/10.30741/eps.v5i2.616>

## INTRODUCTION

Entrepreneurial activities carried out by the community should receive assistance from experts or competent people, especially in the development of the business that is currently being undertaken, because there are many problems faced, ranging from capital economy, selection of raw materials, financial reporting and marketing to a different mindset (Amanda, 2015). Sometimes not in tune with various developing circumstances. The problems faced by business actors are not small, but many, including financial problems as well as marketing problems from the products or businesses they are in. This clearly needs assistance and socialization of the problems they face, especially the problem of raw materials (Sulistyan et al., 2022; Cahyaningati et al., 2022). In terms of raw materials, especially regarding the selection of raw materials in order to produce goods, it should be really available and have added value, not a few business actors have minimal knowledge and mastery of it, which is based on several factors such as lack of experience and utilization in providing raw materials, therefore the selection of alternative raw materials in producing goods needs to be considered. The selection of raw materials is an important factor in the implementation of a business

activity, because with good and available raw materials and sufficient food, the production results will also be in accordance with what is expected (Anwar, 2007: Anwas, 2013). Small and medium enterprises such as tasbih craftsmen who are carried out by several households in Umbulsari Jember in determining alternative raw materials so that they are always available and as expected.

Based on the results of the partner situation analysis above, it can be concluded that the tasbih craftsmen who are in Tanjungsari village, Umbulsari district, Jember need guidance on business development in terms of determining simple raw materials as a form of sustainable sustainability of a business with better future results, so that later they easier to run a business and develop it and get lots of customers who come for their joint business. Therefore, efforts must be made to overcome these problems so that later they do not have recurring problems that they often experience, such as difficulty in marketing products and problems with unclear profit and loss on a business being run, and it is hoped that this assistance will be able to provide solutions regarding the availability of better raw materials for the production of prayer beads than the previous one (Sholihin, 2019; 2020). Through the Widya Gama Lumajang School of Economics' Community Service program, it is hoped that the problems with the group of tasbih craftsmen can be resolved.

The solution offered by the head of the proposer to the group of tasbih craftsmen in order to assist in the selection of alternative raw materials is:

- a. Providing knowledge about what wood waste can be used in making tasbih, so that later it will be able to provide maximum production results and in accordance with what is expected.
- b. Providing assistance in the process of utilizing wood before it is processed into prayer beads to produce good products.
- c. Conducting discussions on all the problems faced in order to get the conclusion of any existing problems, so as to produce entrepreneurial success as expected in terms of the availability of raw materials.

Based on the problems faced by the partners, in this case, the Tasbih Craftsmen Group which is located in Tanjungsari Village, Umbulsari District, Jember Regency, the head of the proposer has a target that will be obtained after the activity. The targets are in the form of:

- a. The organizer of the Tasbih Craftsmen Group which is located in Tanjungsari Village, Umbulsari District, Jember Regency, is able to provide raw materials without having to be confused about choosing and sorting wood to be processed into prayer beads.
- b. The tasbih craftsman group which is located in the village of Tanjungsari, Umbulsari District, Jember Regency is able to take advantage of every opportunity that exists, including utilizing any wood waste as an alternative material for making prayer beads.
- c. A scientific article published in a journal

The level of success of this Community Service activity can be measured from the targets that have been determined above. The measuring instrument is an evaluation of the Tasbih Craftsmen Group which is located in Tanjungsari Village, Umbulsari District, Jember Regency, especially in processing raw materials for the results of assistance in the form of good prayer beads and according to expectations. If the owner of the community is able to practice at least 75%, then this community service is considered successful, but if it is less than these provisions, evaluation is necessary..

## **METHODS**

The problem of partners in this case is the Tasbih Craftsmen Group which is located in Tanjungsari Village, Umbulsari District, Jember Regency, especially concerning the provision of simple raw materials properly and correctly in order to produce prayer beads according to the business being carried out. Therefore, the head of the proposer, through Community Service activities at the Widya Gama Lumajang College of Economics, chose a problem-solving method that was considered appropriate, namely in the form of an intensive mentoring model, discussion and practice. The

mentoring participants are the community as well as the Tasbih Craftsmen Group business actors having their address at Tanjungsari village, Umbulsari District, Jember Regency.

There are limited knowledge and skills of these mentoring participants, namely the Tasbih Craftsmen Group, which is located in Tanjungsari Village, Umbulsari District, Jember Regency. This is due to the lack of knowledge and insight or previous experience. Through this Community Service program, the chief proposer offers various solutions to overcome the aforementioned obstacles. The solution is to carry out intensive mentoring and discussion about the problems that have been experienced, including regarding the selection and provision of alternative raw materials for making tasbih that can provide the expected results well and are easily understood by those who need it, in this case the Tasbih Craftsmen Group located in the village Tanjungsari, Umbulsari District, Jember Regency, namely:

- a. Assistance analyzes the problems faced and looks for solutions to these problems so that later they can be resolved properly and correctly. The method is done through discussions with the Tasbih Craftsmen Group which is located in Tanjungsari Village, Umbulsari District, Jember Regency and providing insight into the proper and correct methods of selecting and utilizing tasbih raw materials.

The materials presented in this activity are:

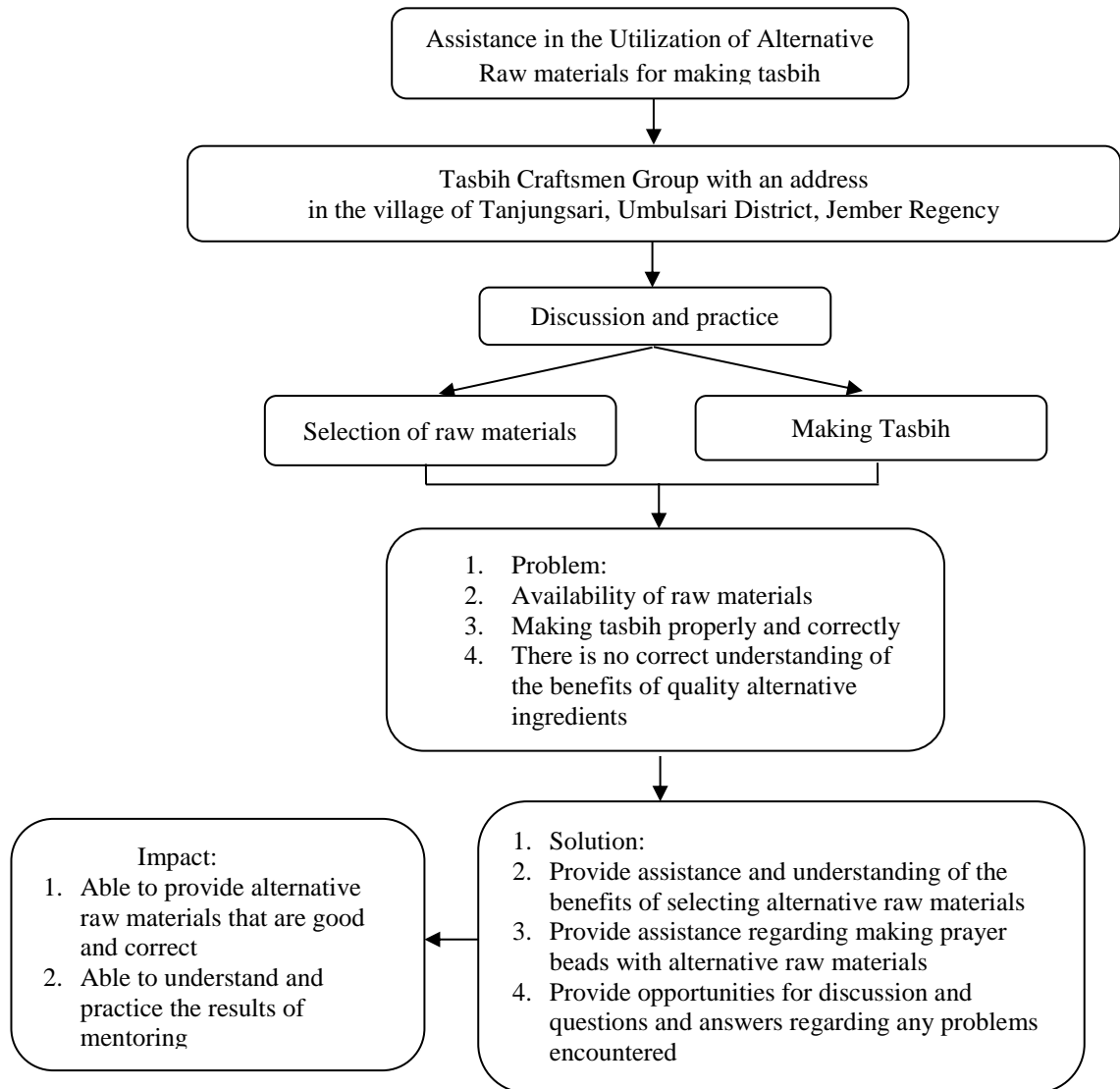
- 1) Explanation of the benefits of sufficient availability of raw materials and the importance of supply of raw materials for production.
- 2) Discussion of the Tasbih Craftsmen Group which is located in the village of Tanjungsari, Umbulsari District, Jember Regency, with assistance with speakers regarding the problems so that later the best and applicable solutions can be found.
- 3) Discussion as well as the practice of processing alternative raw materials in making tasbih properly and correctly which it feels needs to be discussed and carried out.

- b. Providing insight as well as an explanation of the importance of persistence and accuracy in selecting raw materials for life and the sustainability of a business both in the short and long term, in this case we focus more on this understanding, and it is hoped that they will be able to carry out what has been taught.

The material presented is in the form of:

- 1) Purpose and procedures for making prayer beads
- 2) The benefits that will be obtained both in the short and long term from the accuracy in selecting and providing good and quality raw materials.
- 3) Discussion session as well as practice regarding prayer beads.

The clarity of the Community Service activities implemented in the assistance of simple financial report preparation at the Tasbih Craftsmen Group which is located in Tanjungsari Village, Umbulsari District, Jember Regency, is described in a framework of thought. It is intended that this activity is more focused and in accordance with the initial target. The concept image of the application of Community Service activities to partners is as follows:



**Figure 1. Concept of Application of Community Service Activities to Partners**

Source: Community service data processed

## RESULTS AND DISCUSSION

The schedule of Community Service activities is used so that what is carried out is in accordance with the original purpose. The schedule of activities starts from coordination with the head manager of the Tasbih Craftsmen Group, which is located in the village of Tanjungsari, Umbulsari District, Jember Regency from the beginning to the final evaluation of the activity. The schedule for the activities of the head proposer for Community Service activities to partners, in this case the Tasbih Craftsmen Group, which is located in Tanjungsari Village, Umbulsari District, Jember Regency as follows:

**Table 1. Schedule of Implementation of Community Service Activities**

No.	Date	Description of activities
1.	October 05, 2020	Coordinate with the Tasbih Craftsmen Group which is located in Tanjungsari Village, Umbulsari District, Jember Regency and identify any problems, as well as signing contracts with partners.
2.	October 06, 2020	Assistance activities for alternative waste utilization in making tasbih. Supporting documents: Photos of activities

Source: Data processed, 2021

Based on the partners' problems, in this case the Tasbih Craftsmen Group, which is located in the village of Tanjungsari, Umbulsari District, Jember Regency, the head of the proponent of Community Service for the College of Economics, Widya Gama Lumajang, has implemented a program of activities that have been compiled. The activities are as follows:

1. Assistance in selecting and providing alternative raw materials for making tasbih at the Tasbih Craftsmen Group which is located in Tanjungsari Village, Umbulsari District, Jember Regency.

Before providing assistance, there were several stages, namely coordinating with the Tasbih Craftsmen Group which is located in the village of Tanjungsari, Umbulsari District, Jember Regency, namely Nawiya Ulfa which was held on September 30, 2020 at 10.00-11.00 WIB. Located at his residence in Umbulsari, Jember Regency. The next stage of signing a contract with a partner will be held on October 2, 2020 at 10.00 WIB at his residence in Umbulsari, Jember Regency.

Assistance is carried out in two stages as follows:

- a. The first mentoring was carried out on October 5, 2020 at the mother's residence Ulfa in Umbulsari, Jember Regency. . Starting at 09.00 to 12.00 WIB. This was followed by the Tasbih Craftsmen Group having its address in the village of Tanjungsari, Umbulsari District, Jember Regency itself. The material presented in the form of the importance of selecting and providing raw materials for making tasbih for business groups.
  - b. The second mentoring was carried out on October 6, 2020 at his residence Bu Ulfa, whose address is Tanjungsari Village, Umbulsari District, Jember Regency. Starting at 09.00 to 12.00 WIB. The material presented was the practice of making prayer beads made from alternative wood that were correct and easy to understand and in accordance with the needs and problems that had been conveyed and discussed together.
2. Conduct evaluation and practice of making prayer beads according to the results of previous mentoring. As well as discussing which ones still need to be studied and considered next.



**Figure 2. Raw Materials for Making Tasbeh**

Source: Community Service Documentation



**Figure 3. The Process of Making Tasbeh**  
Source: Research Documentation



**Figure 4. Tasbeh Production**  
Source: Community Service Documentation

## CONCLUSION

Based on the description above, the conclusions that can be drawn from the Community Service activities of the Widya Gama Lumajang College of Economics together with the Tasbih Craftsmen Group partner whose address is in Tanjungsari village, Umbulsari District, Jember Regency, are divided into three activities, namely discussion activities about the problems faced and an understanding of business opportunities in small and medium enterprises, as well as designing solutions to solve existing problems, including analyzing the results of the performance that has been done. Then the activity of selecting and supplying wood raw materials as an alternative material for making tasbih that is correct and easily understood by the parties in need, in this case the business actor and other parties who need it. As well as the practice of implementing good and correct prayer beads according to the results of assistance.

## REFERENCES

- Amanda, H. W. (2015) Steregi Pembangunan Desa Dalam Meningkatkan Pendapatan Asli Daerah Melalui Badan Usaha Milik Desa (BUMDES). *Jurnal Adminisatrsi Negara*, 3(5), 7-12. <https://doi.org/10.26740/publika.v3n5.p%25p>
- Anwar. (2007). *Manajemen Pemberdayaan Perempuan Perubahan Sosial Melalui Pembelajaran Vocational Skill Pada Keluarga Nelayan*. Bandung: Alfabeta.



- Anwas, O. M. (2013). *Pemberdayaan Masyarakat di Era Global*. Bandung: Alfabeta.
- Cahyaningati, R., Lukiana, N., Kasno, K., Wiyono, M., Sholihin, M., & Juliasari, D. (2022). Optimalisasi E-Commerce Dalam Meningkatkan Penjualan UMKM Prabu Jaya Almunium. *Indonesia Berdaya*, 3(1), 125-134. doi:<https://doi.org/10.47679/ib.2022184>
- Ditjen PLSP. (2003). *Pedoman Penyelenggaraan Program Kecakapan Hidup (Life Skill) Pendidikan Luar Sekolah*. Jakarta: Titik Media.
- Sholihin, M. R. (2019). Pendampingan Pengembangan UMKM dan Sosialisasi Nabung Saham Di Desa Pandansari Kecamatan Senduro Kabupaten Lumajang. *Empowerment Society*, 2(1), 43-48.
- Sholihin, M. R. (2020). Assistance for Arrangement of Financial Reporting" Batik Ismoyo". *Empowerment Society*, 3(2), 45-49.
- Suharto. (2014). *Membangun Memberdayakan Rakyat: Kajian Strategi Pembangunan Kesejahteraan Sosial dan Pekerjaan Sosial*. Bandung: Refika Aditama.
- Sulistyan, R. B., Carito, D. W., Cahyaningati, R., Taufik, M., Kasno, K., & Samsuranto, S. (2022). Identification of Human Resources in the Application of SME Technology. *Wiga : Jurnal Penelitian Ilmu Ekonomi*, 12(1), 70–76. <https://doi.org/10.30741/wiga.v12i1.799>